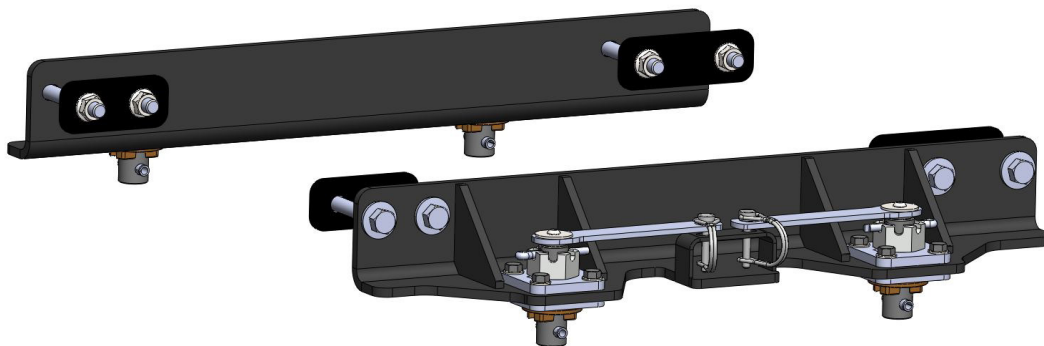




FORD

20K SuperGlide OE Hitch Kit

#4448



Gross Trailer Weight (Maximum) 20,000 lbs.
Vertical Load Weight (Max. Pin Weight) 5,000 lbs.

SYSTEM TOW CAPACITY

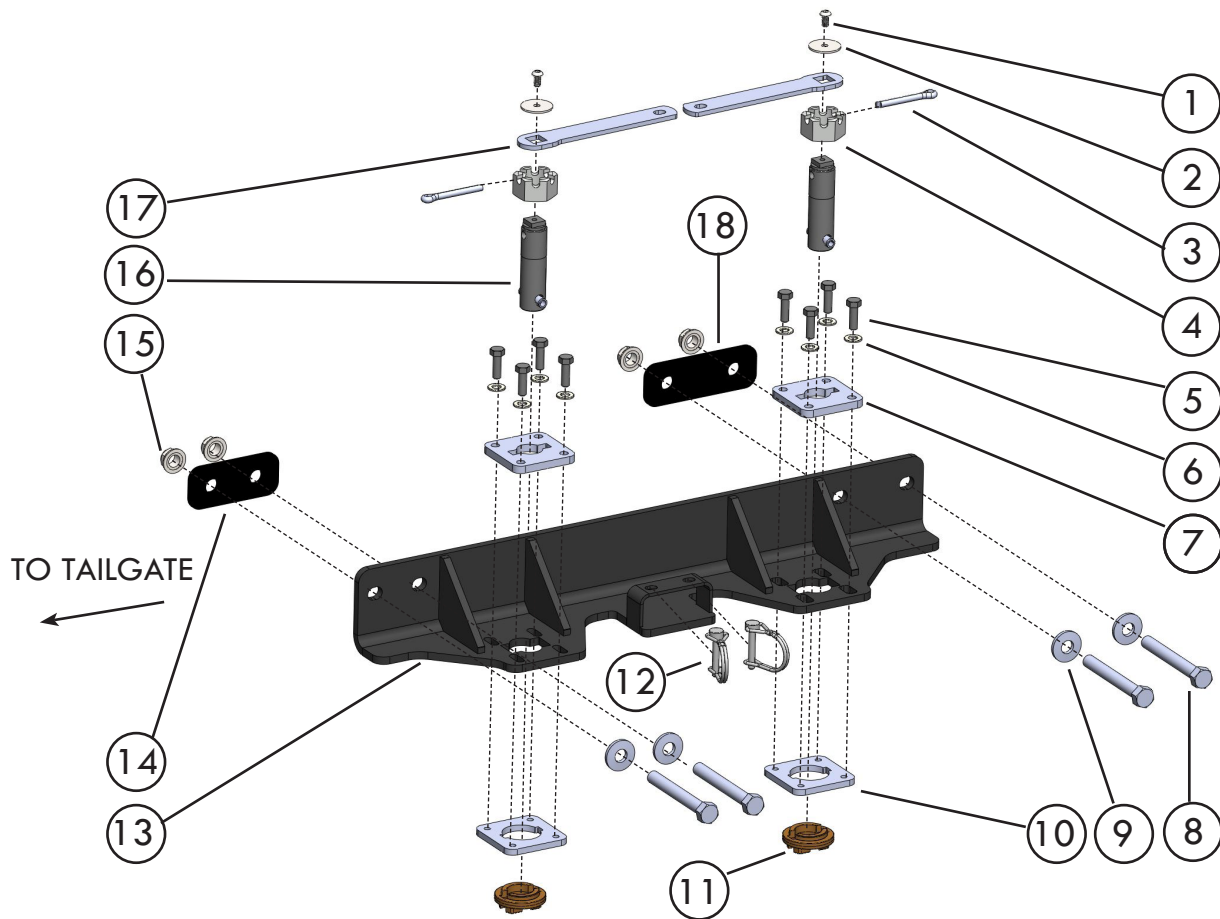
Please note, in order to determine the total tow capacity of a system, you must consider the weight ratings of each component in that system. This includes, but may not be limited to, the capacity/rating of the tow vehicle, the fifth wheel hitch, and the hitch's mounting system. Actual tow capacity of the system will be equal to the lowest rated component.

Installation Instructions

SPECIFICATIONS

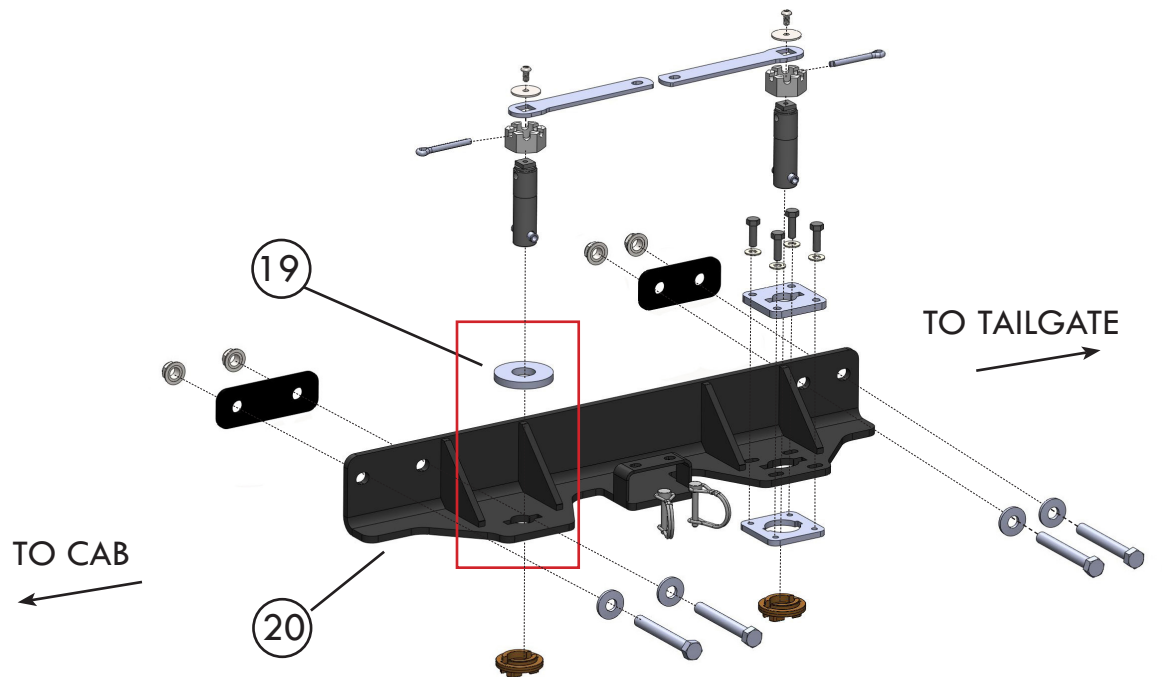
- Fits 2010 to current Ford trucks with the OE puck system
 - Attaches to SuperGlide models #2700 and #2900
- Custom Mounting Bracket Kit (Bracket & Hardware) #4448

#4448 KIT PARTS LIST



NUMBER	DESCRIPTION	QTY	PART NUMBER
1	BUTTON SOCKET CAP SCREW 1/4"-20 X 1/2"	4	98410241
2	HANDLE FLAT WASHER	4	98250150
3	COTTER PIN 1/4" X 2"	4	98410567
4	SLOTTED NUT 1"-14	4	98150121
5	5/16"-18 X 1" HEX CAP SCREW	12	98010244
6	5/16 SAE WASHER	12	98250165
7	ADJUSTMENT PLATE	3	44481201
8	1/2"-13 X 4" HEX CAP SCREW	8	98010191
9	CONICAL SERRATED WASHER 1/2 " ID X 1 1/4" OD	8	98200172
10	SPACER PLATE	3	44481202
11	MOUNTING WASHER	4	13070001
12	LOCKING PIN	4	98410581
13	PASSENGER SIDE FOOT BRACKET	1	444811
14	REAR BACKING PLATE	2	44480106
15	1/2"-13 SERRATED FLANGE NUT	8	98150201
16	OE FOOT POST	4	444807
17	POST HANDLE	4	44481403
18	REAR BACKING PLATE	2	44480107

DRIVER SIDE EXCLUSIVE PARTS



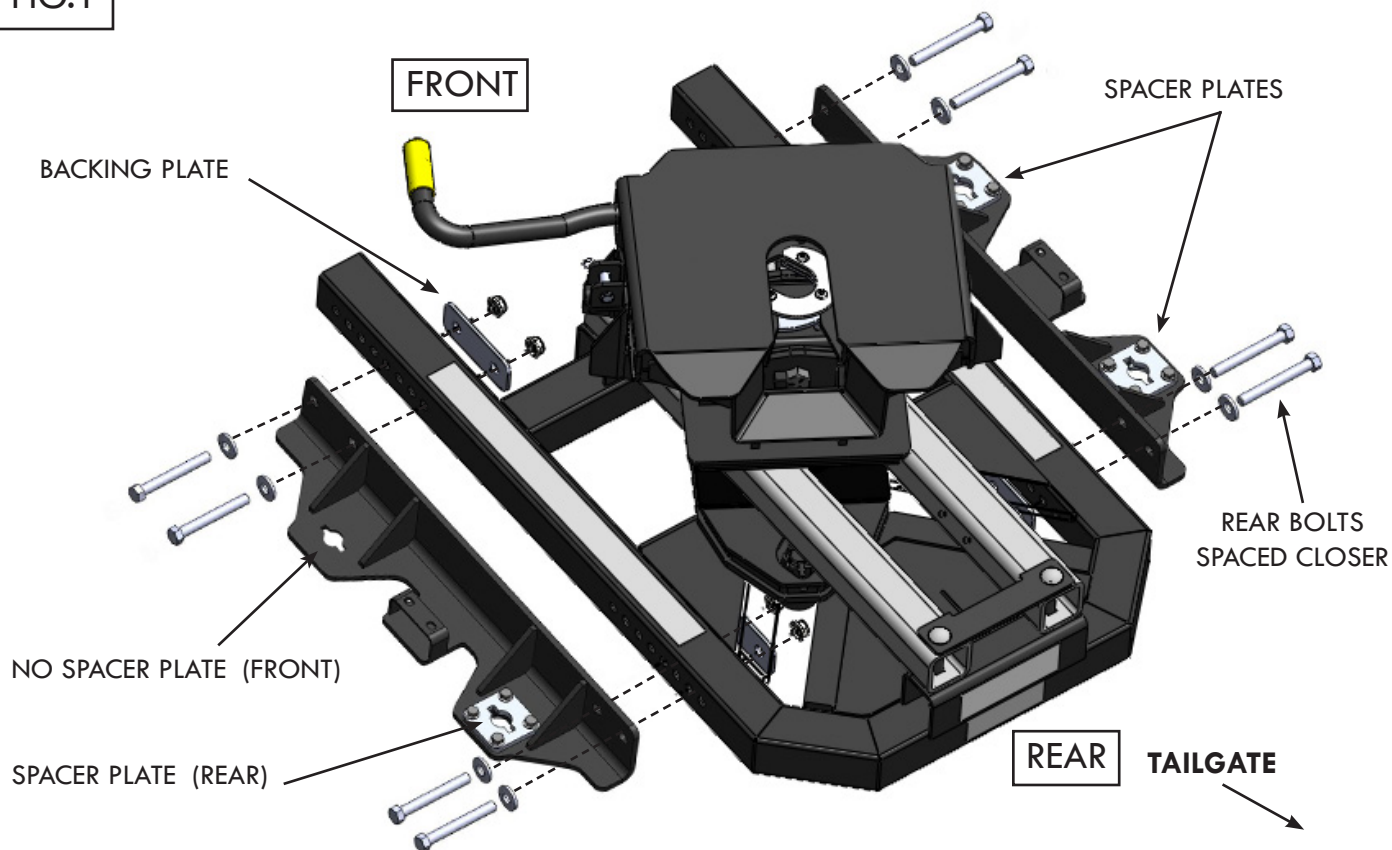
The Driver Side Bracket (front side only) has a different post hole slot set-up than the rest of the post hole slots. It utilizes a washer instead of the spacer plates.

NUMBER	DESCRIPTION	QTY	PART NUMBER
19	BASE WASHER	1	44481005
20	DS FOOT BRACKET	1	444810

ATTACHING KIT TO HITCH BASE

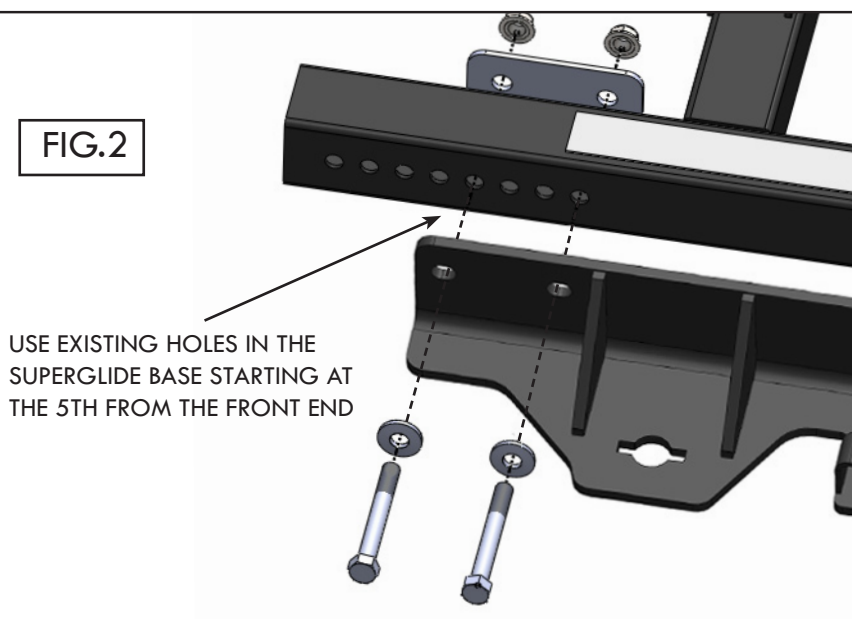
Note: The brackets are different and only work when properly installed on the base. Notice the spacing is closer for the mounting bolts on the rear of both brackets (FIG.1) and post hole openings have Spacer Plates on the passengers side. The driver side has no spacer on the front. However, it does have Spacer Plates on the rear.

FIG.1



1. Place the kit brackets on the #2700 or #2900 SuperGlide base with foot reinforcement backings and attach each using (4) 1/2-13 X 4 Hex bolts, (4) Conical serrated washers, and (4) 1/2"-13 serrated flange nuts.
2. Place brackets starting at the 5th hole from the front end on the Super Glide base (FIG.2).
2. Hand tighten all hex bolts.

FIG.2



BUILDING THE POST ASSEMBLY

Build the (4) post assemblies used for clamping hitch and kit to the bed of the truck.

1 - Button Head Screw #98410241

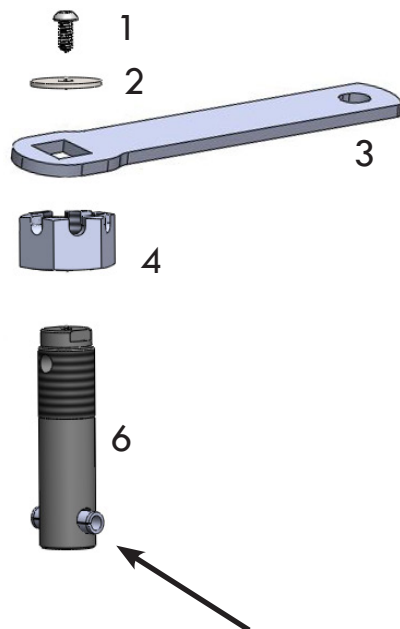
2 - Washer #98250150

3 - Lock Handle #44481403

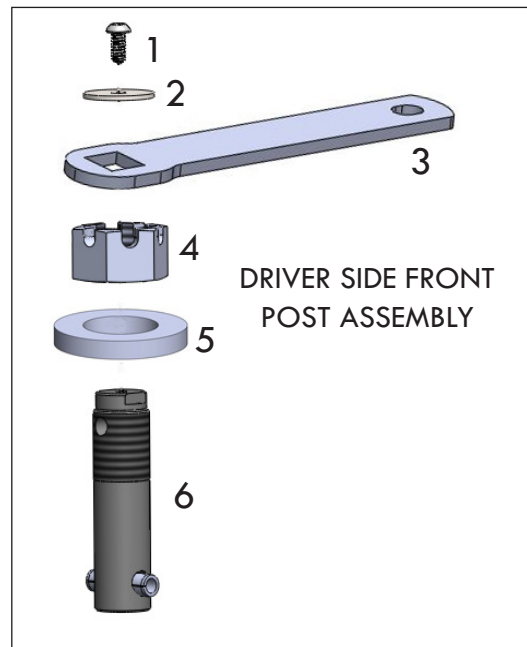
4 - Castle Nut #98150121

5 - Post Washer #44481005

6 - Post #444807



ROLL PIN (FACTORY SET)



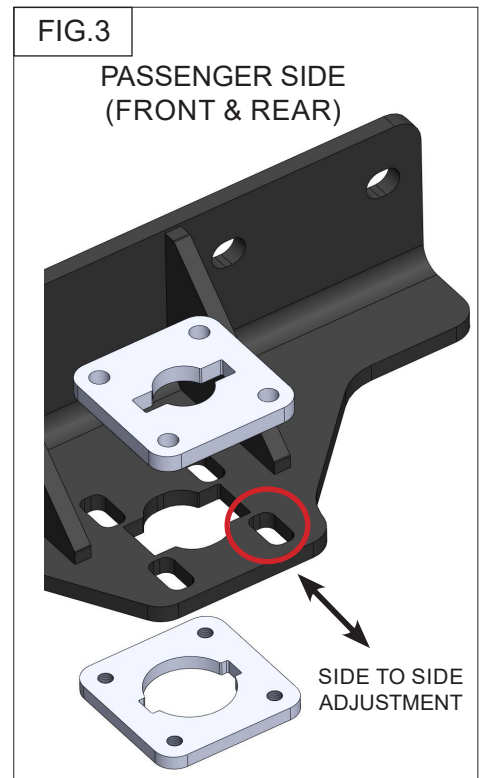
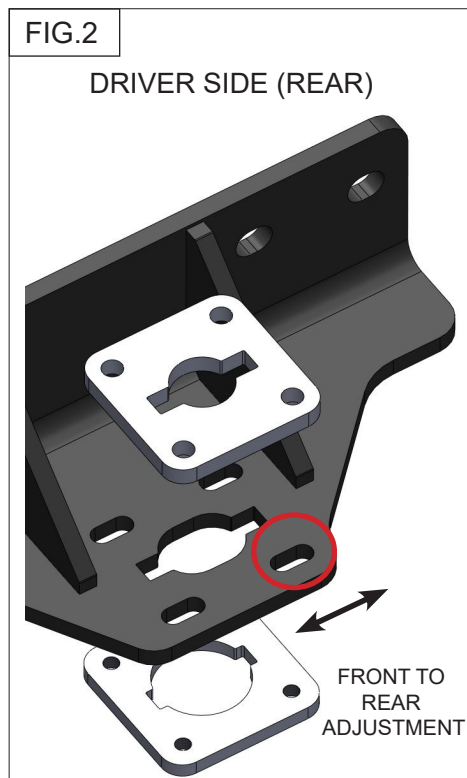
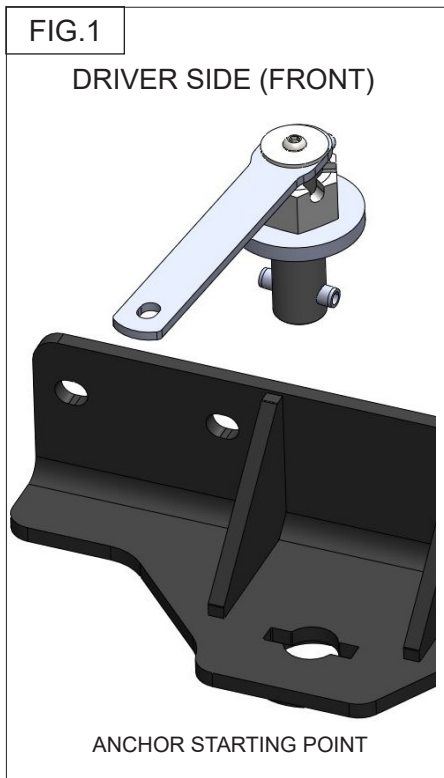
DRIVER SIDE FRONT
POST ASSEMBLY

1. Place the Post Washer on one Post. This will be for the driver side front (see inset).
2. Thread the Castle Nut onto the Post.
3. Take the Lock Handle and place on top of the Post as shown. The handle cut-out fits down over square top on Post. The Lock Handle should be oriented on the Post pointing opposite the direction of the Roll Pin.
4. Add the Washer and Button Head Screw and hand tighten with an allen wrench.

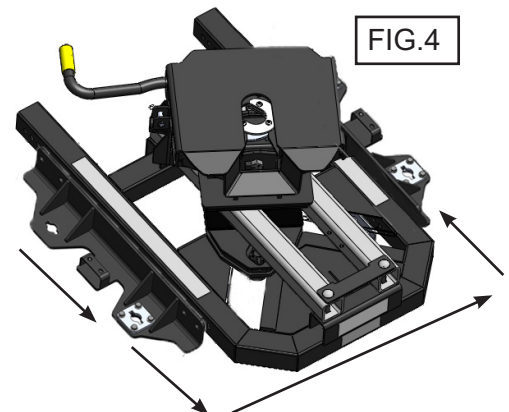
ADJUSTING FOR A CUSTOM FIT

When seating and attaching the SuperGlide with installed Bracket Kit (see next page), you will be able to adjust the hardware for a tighter custom fit to the truck bed by using the method below. The Spacer Plates sit on oblong holes in the bracket and can be adjusted side to side (passenger side), or front to rear (driver side) if needed by loosening and re-tighting the (4) bolts securing them in place.

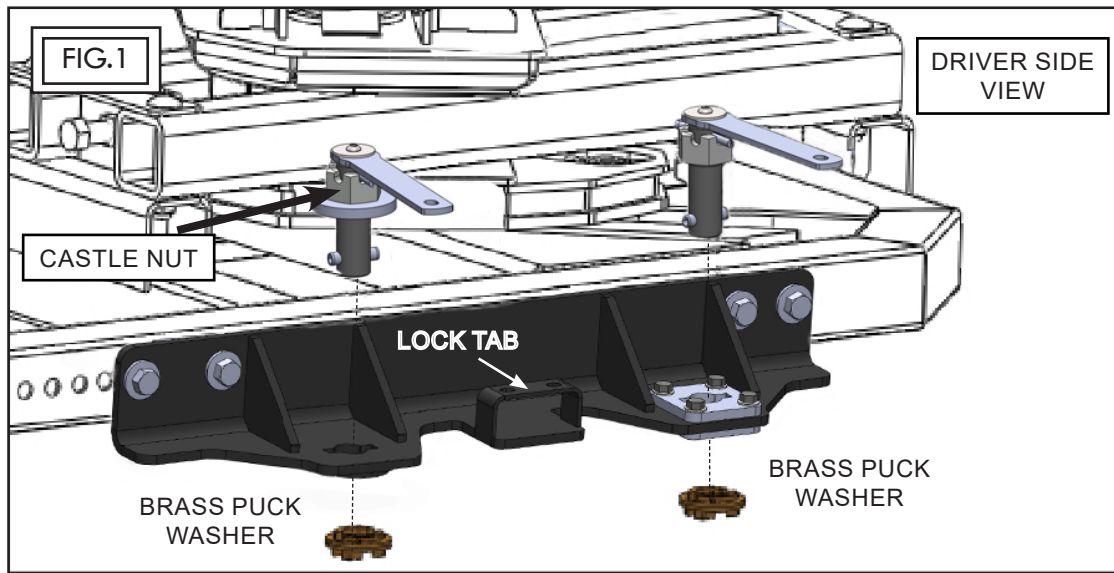
1. Start from the driver side front as the anchor point and insert the post assembly that has the large post washer (FIG.1).
2. Next, attach the driver side rear post, this Spacer Plate is adjustable front to back (FIG.2).
3. From that point, work around to the passenger side rear, this Spacer Plate is adjustable from side to side (FIG.3).
4. The passenger side front is next. Both passenger side Spacer Plates work in the same direction.



Start with the driver side front and work in a U-shape (FIG.4) around the hitch for best fitting results.

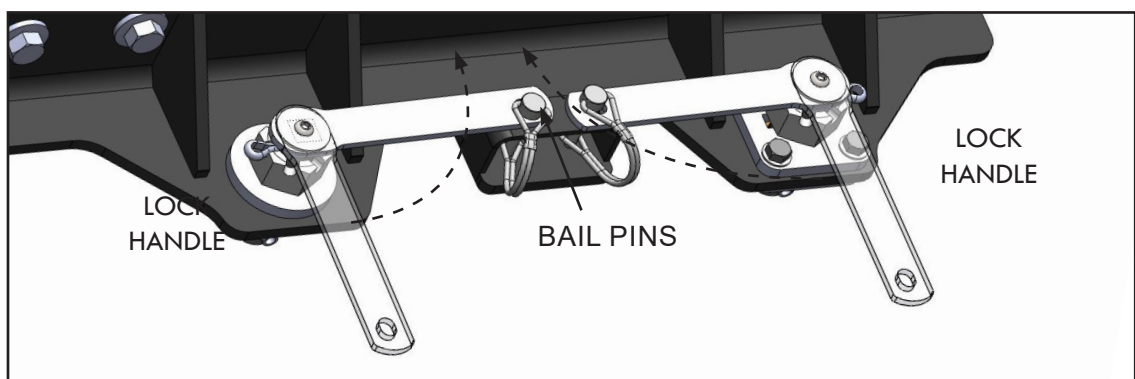


SEATING HITCH AND KIT IN TRUCK BED



1. Place the (4) Brass Puck Washer in the OE puck holes on truck bed (FIG.1). They should easily fit into the puck. In some instances, It may be necessary to lightly file the Brass Puck Washers to get them to fit as puck hole tolerances may vary.
2. Place hitch on the seated Brass Puck Washers.
3. Starting with the driver side, take a Post Assembly and insert into the Brass Puck Washer in an open position as shown (FIG.1). Press and turn 90 degrees inward to the Lock Tab. At this point, tighten the Castle Nut on the Post Assembly just a few turns until it is firm. Feed the Cotter Pin through the Castle Nut and hole in post thread and bend ends to lock. Repeat this step with the other Post Assemblies.
4. Quarter turn the Lock Handles inward until holes are aligned with the Lock Tab (FIG.2).
5. Place the Bail Pins through holes in Lock Tabs and Lock Handles, and snap bail pin to lock.
6. Tighten all 1/2"-13 X 4" hex bolts to 75 foot pounds.

FIG.2





Manufactured by PULLIAM ENTERPRISES, INC. 13790 East Jefferson Blvd. Mishawaka, IN 46545
(800) 443-2307 - www.pullrite.com